

Meraki 8.2

#MORETHANAJORYRIDE

CHANDIGARH - KASAULI - CHANDIGARH

3D/2N



TABLE OF *Contents* ✨

DARE GEAR
—ADVENTURE REDEFINED—

01

About Us

02

Brief Itinerary

03

Detailed Itinerary

04

Inclusions & Exclusions

05

Costing

06

Payment & Cancellation

07

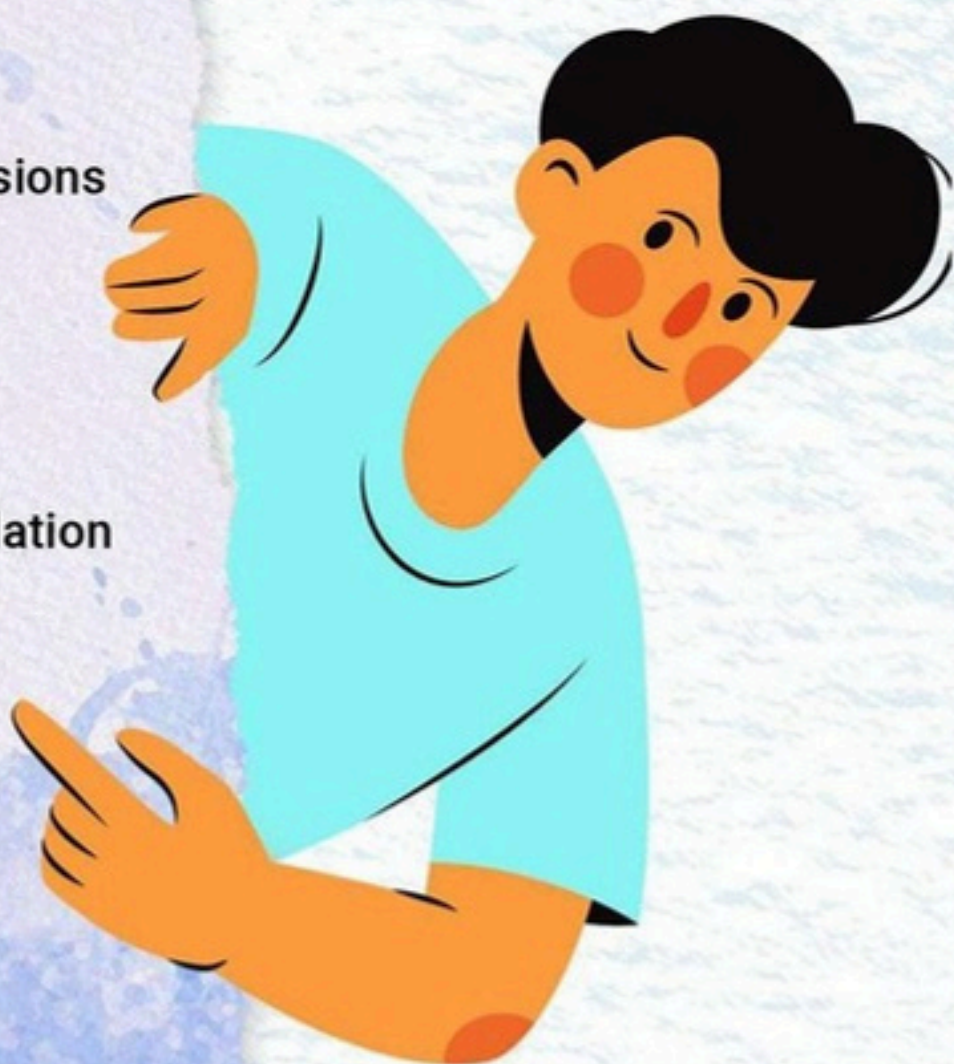
Booking Process

08

FAQ

09

Must Know





OVERVIEW

Get ready to escape the ordinary and embrace the thrill of cycling through one of North India's most picturesque routes! Starting from the vibrant city of Chandigarh, this expedition takes you on a scenic ascent to Kasauli, a serene hill station nestled amidst pine forests and colonial charm in Himachal Pradesh.

Over the course of three days, cover 130–140 km of diverse terrain—rolling roads, forested climbs, and thrilling descents. Whether you're chasing your personal best or simply soaking in the serenity, this ride promises a soul-refreshing experience.

With a full support crew, premium hospitality, and camaraderie-driven vibes, this adventure is more than just a ride—it's a memory in the making.



WHY

DARE2GEAR
ADVENTURE REDEFINED

Travel

WITH D2G



DARE2GEAR YOUR GATEWAY TO ADVENTURE!

At D2G, our foundation is built on trust, care, and positive vibes. We prioritize the well-being of our community, ensuring warm welcomes, safety, and environmental responsibility. Join us for an authentic experience where your journey matters not just to you but to the world around you.

We motivate each other, seize opportunities in new ideas, and believe that learning is a journey worth taking. Embark on a journey where every call is answered, every moment is crafted, and every adventure leaves you transformed.



300+ Community Rides



400+ Weekend Trips



100+ Corporate Trips



4.8 Reviews on Trip Advisor



Year of Experience



24X7 Support



Health & Hygiene

Brief Itinerary

Day 1:

Arrival in Chandigarh –
Settle In & Gear Up



Day 2:

Chandigarh to Kasauli



Day 3:

Kasauli to Chandigarh |
Back to Noida



DETAILED Itinerary

DARE  GEAR
—ADVENTURE REDEFINED—



DAY 1:

ARRIVAL IN CHANDIGARH | MORNING DRIVE

Stay: Hotel Stay (3 Star)

- ☀️ Arrive in the beautifully planned city of Chandigarh—a city that blends modern design with natural charm.
- ☀️ Known for its green boulevards and calm vibe, it sets the perfect tone for the adventure ahead.
- ☀️ Check into your comfortable hotel stay and take some time to relax and settle in.
- ☀️ Whether you're catching up on rest or taking a short stroll nearby, this day is all about easing into the journey.
- ☀️ By 4:00 PM, gather for a warm welcome and the official route briefing session.
- ☀️ Meet your fellow riders, soak in the shared excitement, and get familiar with the terrain, climbs, descents, and scenic highlights of the upcoming ride.
- ☀️ Engage in an interactive Q&A with our experienced ride captains and crew—perfect for clearing any doubts and building a sense of camaraderie with the group.
- ☀️ As the sun sets, enjoy a comforting evening tea with cookies, followed by a delicious dinner to fuel you up for the climb ahead.
- ☀️ Wrap up the day with a peaceful night's sleep, knowing that the Himalayan journey begins at sunrise.



DAY 2:

CHANDIGARH TO KASAULI | 70 KM

Stay: Hotel Stay(3 Star)

Flag-off Time: 7:30 AM

- ☀ Wake up to a fresh morning in Chandigarh and kickstart the day with a wholesome breakfast at the hotel.
- ☀ With energy levels high and spirits even higher, gear up for an unforgettable uphill journey – flag-off is at 7:30 AM.
- ☀ As the wheels roll, you'll gradually leave behind the urban calm of Chandigarh and head toward the verdant foothills of Himachal Pradesh.
- ☀ The ride starts with smooth rolling roads, offering a gentle warm-up before transitioning into scenic climbs that snake through the Shivalik ranges.
- ☀ Immerse yourself in the changing landscape – pine-scented forests, cool mountain breezes, and breathtaking valley views will accompany you all the way.
- ☀ At the midpoint, take a well-deserved lunch break to refuel, hydrate, and share laughs with fellow riders.
- ☀ As you push through the final ascent toward Kasauli, the atmosphere becomes more serene and the views more rewarding.
- ☀ On arrival, you'll be greeted with a refreshing welcome drink, marking the end of a triumphant climb.
- ☀ Settle into your hotel, freshen up, and unwind.
- ☀ As dusk falls, gather with the group for a cosy dinner, exchanging stories from the day's ride.
- ☀ Then, retreat into the calm of the mountains for a well-earned night's rest – tomorrow, the downhill adventure awaits!



KASAULI-CHANDIGARH | 70 KM | BACK TO NOIDA

Flag-off Time: 7:30 AM

- ☀ Wake up to the crisp mountain air and soak in the peaceful vibes of Kasauli as a new adventure begins.
- ☀ After a light, energizing breakfast, it's time to get ready for the ride back.
- ☀ Flag-off is at 7:30 AM, so make sure you're fueled and geared up for the journey ahead.
- ☀ The descent from Kasauli is a thrilling contrast to the previous day's climbs.
- ☀ With cool breeze brushing your face and pine-scented winds guiding the way, enjoy the fast-paced downhill ride through forested trails and winding roads.
- ☀ As you glide down the mountain, soak in the early morning light spilling over the hills and the serene views of the Shivalik landscapes.
- ☀ This leg of the ride offers smoother terrain and a chance to enjoy the flow and rhythm of cycling through nature, truly.
- ☀ Around the midpoint, take a relaxed break for lunch, sharing laughs, reflections, and maybe a few friendly debates on who had the smoothest descent!
- ☀ Continue the final stretch toward Chandigarh with hearts full and legs satisfied.
- ☀ Upon reaching the hotel, you'll be welcomed once more with a cool drink to refresh and recharge.
- ☀ After freshening up, get ready for the much-awaited felicitation ceremony — a time to celebrate personal achievements, friendships forged on the saddle, and the sheer joy of completing an epic two-day adventure.
- ☀ Cap it all off with a hearty farewell dinner, then prepare to board your return transport to Noida, carrying with you stories, selfies, and memories that'll last a lifetime.

Inclusions

- Hotel Stay-3 star or above
- Breakfast-2
- Dinner- 3
- Evening Tea with cookies – 3
- Facilitation Ceremony
- Flag-off Ceremony
- Certificate
- Medal
- Photography
- Videography
- Meraki Soverner
- Wrist Band
- Helmet Sticker
- Cycle Sticker
- Travel Card
- Travel Backpack
- Rider Id
- Luggage carrying Support
- Hydration Support
- Nutrition Support
- Technical Support
- Mechanical Support
- Ride Marshals
- Support Vehicle



Exclusions

- Anything which is not mentioned





COSTING

Per Person

DARE  GEAR
—ADVENTURE REDEFINED—

BATCH DATE

OCTOBER

11th - 13th

Price From:

Rs.12,999/- *Per Person

ADD ONS

- Rider Transportation (₹ 2999)
- Cycle on Rent (₹ 3990)
- Cycling Jersey (₹ 1500)
- Single Sharing Stay (₹ 5846)
- Cycle transportation (Noida to Chandigarh) (₹ 2999)



OUR ASSOCIATIONS

WELLNESS PARTNER



PIONEER YOGA STUDIO

REHAB PARTNER



ANODYNESPINE

PAYMENT Policy

	Upto 60 Days	59 - 45 Days	44 - 30 Days	29 - 21 Days
Booking Amount	✓	✓	✓	✓
50% Payment	Optional	Required	✗	✗
75% Payment	Optional	Optional	Required	✗
Full Payment	Optional	Optional	Optional	Required

CANCELLATION Policy

	Upto 60 Days	59 - 30 Days	29 - 15 Days	14 - 0 Days
Batch Shifting	✓	✗	✗	✗
Cancellation Charge	15% Deducted	25% Deducted	50% Deducted	100% Deducted
Amount	Partial Refund	Partial Refund	Partial Refund	No Refund
Future Credits	100%	90%	70%	50%

Note: *All refunds shall be initiated on tour cost excluding GST charges.

PACKING Checklist

DARE  GEAR
— ADVENTURE REDEFINED —



Things to Carry

- | | |
|--|--|
| <input type="checkbox"/> Helmet (Mandatory) | <input type="checkbox"/> 1 Jeans |
| <input type="checkbox"/> Front Headlight (Mandatory) | <input type="checkbox"/> 1 Sleeper |
| <input type="checkbox"/> Tail Light (Mandatory) | <input type="checkbox"/> 2 pairs of cycling shoes (in case |
| <input type="checkbox"/> Reflective Vest/ Tape (Mandatory) | <input type="checkbox"/> one gets wet due to rain and |
| <input type="checkbox"/> Water Bottle/Sipper (Mandatory) | <input type="checkbox"/> water on the way) |
| <input type="checkbox"/> Cycling gloves (Mandatory) | <input type="checkbox"/> 2 pair of socks |
| | <input type="checkbox"/> Sunglasses or eye wear for the |
| | <input type="checkbox"/> day and riding in a dark time. |

Necessary Items

- | | |
|--|---|
| <input type="checkbox"/> 1 Small Backpack | <input type="checkbox"/> 1 Raincoat / Windcheater |
| <input type="checkbox"/> 2 Jersey's | <input type="checkbox"/> Extra batteries or charger for |
| <input type="checkbox"/> 2 Shorts | <input type="checkbox"/> Cycling lights |
| <input type="checkbox"/> 1 Sweatshirt | <input type="checkbox"/> Mini tool kit |
| <input type="checkbox"/> 1 lower/ Track pant | <input type="checkbox"/> 2 Cycle Tubes |
| <input type="checkbox"/> 2 T-shirts | <input type="checkbox"/> Personal Toiletries |
| | <input type="checkbox"/> Any medicine if you are taking |

Note: * Your bag must not exceed 8 kg. Any additional weight will incur a charge of INR 100 per kilogram for luggage handling.



BOOKING *Process*

BANK DETAILS:

Bank Name: IDFC

Name: Dare2Gear Enterprises

Ac/no: 10066529057

IFSC CODE: IDFB0020151

Branch: Noida Sector 18 GB Nagar



UPI ID: vmwa@hwa6@okaxis

SCAN TO PAY

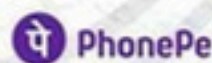
UPI TRANSFER



99538 12886



99538 12886



99538 12886



99538 12886

FAQ

DARE GEAR
ADVENTURE REDEFINED

Q. Which type of cycles are allowed in this ride?

As this ride is designed to explore mountains so only 2 types of cycles are allowed, MTB cycles or MTB focused hybrid cycles with minimum tire width of 700*45C. No any other type of bike is allowed like road or rigid fork hybrid to ensure the safety of each rider.

Q. Do you provide cycle on rent, if yes then which bike you provide?

Yes, we do provide cycles on Rent. We have Polygon Cascade 4 available for rent. To know more details about bike specifications details please visit below shared link [polygon-cascade-4](#)

Q. Will I get the cycle according to my height for this ride?

As we have multiple cycle to offer on rent for all sizes ranging from S to XL, so you will get the cycle of right frame size for your ride.

Q. What is included in the cost of cycle rental?

We give only cycle to ride all other mandatory items and accessories you want on cycle you have to bring yourself.

Q. I have taken a cycle on rent When will I get and where?

You will get the cycle on rent a day before start of ride. You will get your cycle at in the same hotel where you will be staying on day one of tour.

Q. What Things do I need to Carry?

Things to Carry

- Helmet (Mandatory)
- Front Headlight (Mandatory)
- Tail Light (Mandatory)
- Reflective Vest/ Tape (Mandatory)
- Water Bottle/Sipper (Mandatory)
- Cycling gloves (Mandatory)

Necessary Items

- 1 Small Backpack
- 2 Jersey's
- 2 Shorts
- 1 Sweatshirt

- 1 lower/ Track pant
- 2 T-shirts
- 1 Jeans
- 1 Sleeper
- 2 pairs of cycling shoes (in case one gets wet due to rain and water on the way)
- 2 pair of socks
- Sunglasses or eye wear for the day and riding in a dark time.
- 1 Raincoat / Windcheater
- Extra batteries or charger for Cycling lights
- Mini tool kit
- 2 Cycle Tubes
- Personal Toiletries
- Any medicine if you are taking

Q. what will be weather conditions in daytime when cycling ?

And is it cold in evening there ?

Pleasant – yes morning and evening are cold for evening a jacket / pullover is advised

Q. most of our cycling/expedition will be in daylight, right ?

Yes, plan is this but as we have seen sometimes people when about to reach like 4 – 5 km left it gets dark so at that point lights are mandatory and required.

Q. Does the mobile network at most of places in route?

Yes, mobile networks are available throughout the route.

Q. Does the route have shops for any refreshments?

Yes, but limited and small.



MUST *Know*



- **Adherence to Tour Program:** Please adhere to the tour schedule. There will be no refunds for late arrivals, early departures, or unused tour services.
- **Liability Disclaimer:** We are not liable for costs arising from accidents, theft, or changes due to natural disasters, government orders, strikes, political disturbances, disease-related issues, or adverse weather conditions.
- **Handling Unexpected Costs:** Any unexpected expenses or changes due to the mentioned reasons must be borne by the participants and settled directly with our Point of Contact (POC) or trip captain.
- **Additional Charges:** Additional charges, such as Early Check-in, Late Check-out, or room view requests, are subject to availability and must be settled directly with the hotels or service providers.
- **Limitations in Remote Locations:** We strive to provide the best experience, but limitations in remote locations may affect our offerings. Your understanding and cooperation are appreciated.
- **Bus Service:** The bus service between Delhi and the base is managed by a third-party vendor. In case of a breakdown, we will arrange a backup bus as soon as possible.
- **Respect for Nature and Communities:** Let's cherish our adventures by respecting nature, communities, and trails. Remember, your belongings are your responsibility.
- **Making Adventures Memorable:** Respect the places we visit and the locals we meet to make our adventures unforgettable. Keep your gear close, as we cannot replace lost items.
- **Room Sharing Details:** Sharing a room with 3 people? We provide cozy mattresses for comfortable rotation during sleep.